

Sample report

Title of report

A. B. Ivanov¹, V. G. Petrov²

¹IG FRC Komi SC UB RAS, Syktyvkar; e-mail.

²SPSU, Saint-Petersburg; e-mail

The title of reports, authors' surnames, title of organization are centered. The contributor's family name is underlined. The volume of the manuscript is no more than 2 A4 pages (including tables and pictures) with margins 2 cm from all sides. The text should be scaled in Microsoft Word (*.doc, *.rtf). Font — Times New Roman, size — 12 points. Paragraph indentation for the first line — 1 cm, line spacing — 1.5, alignment — by width, without hyphens. Symbols are from typeset Symbol, formulas are edited in Microsoft Equation. Text and table formatting, insertion and location of pictures is by means of MS Word. All objects should be scaled. References in text are numbered in square brackets [1]. References are given after body text.

Each report should be sent in separate email with attached files. The files should be named by contributor's surname, a digit is added to the surname if necessary. The folder should include: Ivanov1-text.doc – text; Ivanov1-tabl.doc – tables; Ivanov1-pic.doc – captions to pictures; pictures are in files Ivanov1-pic1 and so on. in bitmap or vector formats TIFF (pc), JPEG, EPS, CDR. Pictures in Word and Excel formats only are not subject to submission.

Printed copies should include tables and pictures in the text.

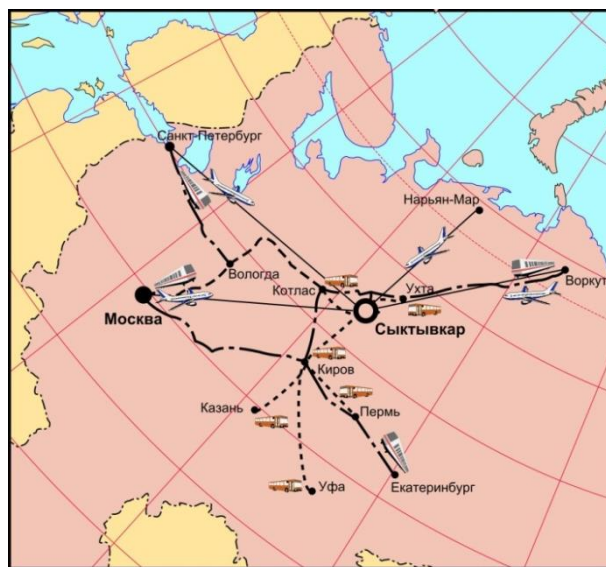
References

1. Ivanov I. I., Petrov P. P. Title of article // Title of journal. 2005. V. 00.No. 00. P. 00—00.
2. Sidorov S. S. Title of monography. City: Publishers, 2005. 00 pp.
3. Aleksandrov S. T. Title of thesis // Title of event (meeting, conference). City: Publishers, 2010. P.00-00.



Transport

Syktyvkar is connected with large Russian cities by airlines. Time of flight from Moscow and Saint-Petersburg — 1 hour 40 min. Time of travel by train Moscow — Syktyvkar — 25 hours. Participants from Ural and Siberia can change to bus in Kirov.



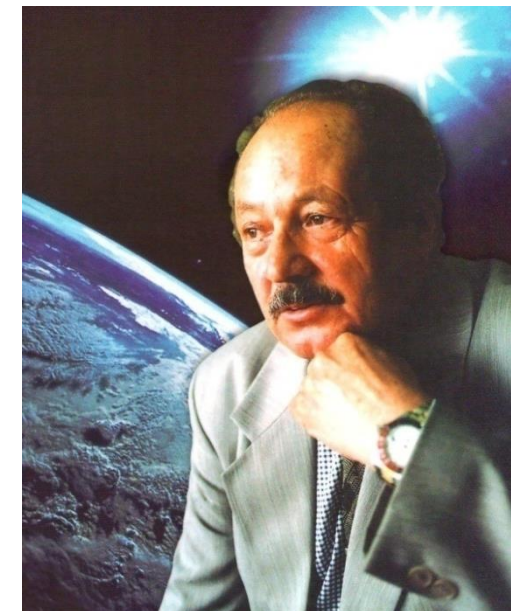
The Ministry of Science and Higher Education
of the Russian Federation
Russian Mineralogical Society
Federal Research Center «Komi Science Center of
the Ural Branch of the Russian Academy of Sciences»
Institute of Geology named after Academician
N. P. Yushkin of Komi Science Center of UB RAS
Russian Foundation for Basic Research



Yushkin Readings – 2020

**RUSSIAN CONFERENCE WITH
INTERNATIONAL PARTICIPATION**

**MODERN PROBLEMS OF
THEORETICAL, EXPERIMENTAL
AND APPLIED MINERALOGY**



Syktyvkar,
Komi Republic, Russia
May 19—22, 2020

Dear colleagues!

Institute of Geology named after Academician N. P. Yushkin of Komi Science center of Ural Branch of Russian Academy of sciences will conduct Russian conference with international participation “Modern problems of theoretical, experimental and applied mineralogy” (Yushkin Readings – 2020) on May 19–22, 2020 in Syktyvkar and invite you to take part in it. For more information, see the website: <https://geo.komisc.ru/en>

ORGANIZATIONAL COMMITTEE:

Chairman:

A. M. Askhabov, Academician of RAS

Co-chairs:

Yu. B. Marin, Corresponding Member of RAS
S. V. Krivovichev, Corresponding Member of RAS
O. B. Kotova, D. Sc. (geol.-min.)

Science secretaries:

D. A. Shushkov, Cand. Sc. (geol.-min.)
A. V. Ponaryadov, JRF

ADDRESS:

Institute of Geology Komi SC UB RAS
54, Pervomayskaya street, Syktyvkar,
Komi Republic, 167982

PHONES:

+7 (8212)24-53-53 — Director Office
+7 (8212) 44-71-51 — Kozyreva Irina Vladimirovna
(Science Secretary of IG FRC Komi SC UB RAS)
+7 (8212) 24-51-60 — Shushkov Dmitry Alexandrovich
Fax: +7 (8212) 24-09-70, 24-53-46
E-mail: dashushkov@geo.komisc.ru
for foreign participants —
avponaryadov@geo.komisc.ru

Scientific program

1. *History, philosophy and methods of mineralogy.*
2. *Genetic mineralogy. Typomorphism of minerals and mineral associations. Genetic information mineralogy.*
3. *Mineralogical crystallography and crystal genesis.*
4. *Constitution and features of minerals. Physic of minerals.*
5. *Micro- and nanodisperse state of mineral substance. Nanomineralogy.*
6. *Biom mineralogy. Organic minerals and biomineral interactions. Organic minerals and mineraloids.*
7. *Experimental simulation of mineral formation processes.*
8. *Deposit mineralogy. Topomineralogy.*
9. *Geomaterial science. Rational application of mineral raw.*
10. *Mineralogy of astroblemes and meteorites*
11. *Museology. Basics of the conservation of geological information.*

The XIII Russian Seminar on Technological Mineralogy “Mineralogical and technological assessment of solid minerals, problems of ore preparation and mineral raw processing” will be held as part of the conference. For more information, see the website: <http://igkrc.ru>

Presentation

1. Reports are to be written in Russian or English according to the rules, described in this letter.
2. Reports should be ready for immediate presentation and submitted to Organizational Committee in printed and digital forms (digital form is necessary). Every participant can submit no more than 2 reports. Submitted materials will be published by the beginning of the seminar.
3. Registration and submission is carried out by e-mail of the seminar dashushkov@geo.komisc.ru with indication of Full Name in the Subject field.
4. All submitted materials should be authorized for open publishing (printed and digital).
5. Each contributor can submit no more than two reports as the first author.
6. Reports are plenary (25 minutes), oral (15 minutes) and poster.
7. Contributor can suggest a new section within the program. Inclusion of such a section will be decided by Organizational Committee.
8. Organizational committee reserves the right to exclude materials that are not corresponding to the themes of the conference and presentation rules.

Deadlines

Report submission	01 March 2020
Program mailing	30 April 2020
Registration of participants	18 May 2020
Conference Opening	19 May 2020

Registration form

Surname _____

Name _____

Patronymic _____

Position _____

Science degree _____

Organization _____

Fax _____

Phone _____

E-mail _____

Title 1 _____

Report form oral poster

Title 2 _____

Report form oral poster

Participation:

Personal

Very possible
Possible
Problematic

In Absentia